



CARAHAN · PROCTOR · CROSS, INC.

CONSULTING ENGINEERS · SURVEYORS · PLANNERS

6101 WEST ATLANTIC BOULEVARD, MARGATE, FLORIDA 33063
PHONE: 954-972-3959 FAX: 954-972-4178

AUGUST 2001

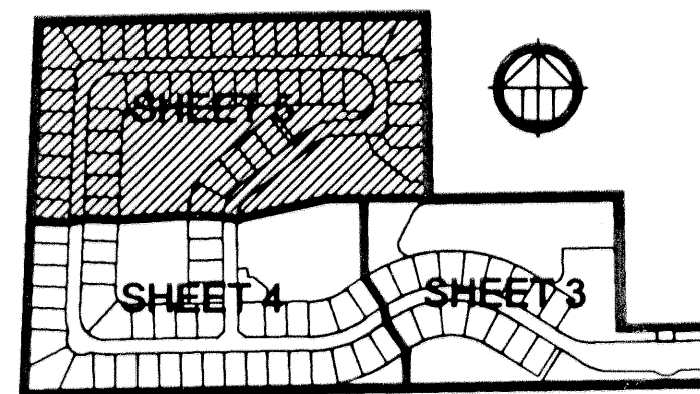
000605

DCW

CYPRESS LAKES PRESERVE P.U.D.

A REPLAT OF TRACTS 11, 14, AND 15, AND PORTION OF TRACTS 12, 13, AND 16, IN BLOCK 35, "PALM BEACH FARMS COMPANY PLAT NO. 3" (P.B.2, PGS.45-54, P.B.C.R.), IN SECTION 36, TOWNSHIP 44 SOUTH, RANGE 41 EAST, PALM BEACH COUNTY, FLORIDA

CURVE TABLE	RADIUS	DELTA	ARC LENGTH	CHORD BEARING	CHORD LENGTH
C7	113.00'	86° 57' 43"	171.51'	N45° 32' 32"E	155.51'
C8	113.00'	43° 28' 51"	85.75'	N23° 48' 06"E	83.71'
C9	113.00'	43° 28' 51"	85.75'	N67° 16' 57"E	83.71'
C10	138.00'	17° 05' 09"	41.15'		
C11	113.00'	44° 55' 45"	88.61'	S68° 30' 45"E	86.36'
C12	113.00'	92° 04' 57"	181.61'	S00° 00' 24"E	162.68'
C13	113.00'	42° 50' 54"	84.51'	S67° 27' 31"E	82.55'
C14	25.00'	44° 10' 14"	19.27'		
C15	138.00'	38° 15' 32"	92.15'		



KEY MAP
NOT TO SCALE

LEGEND:

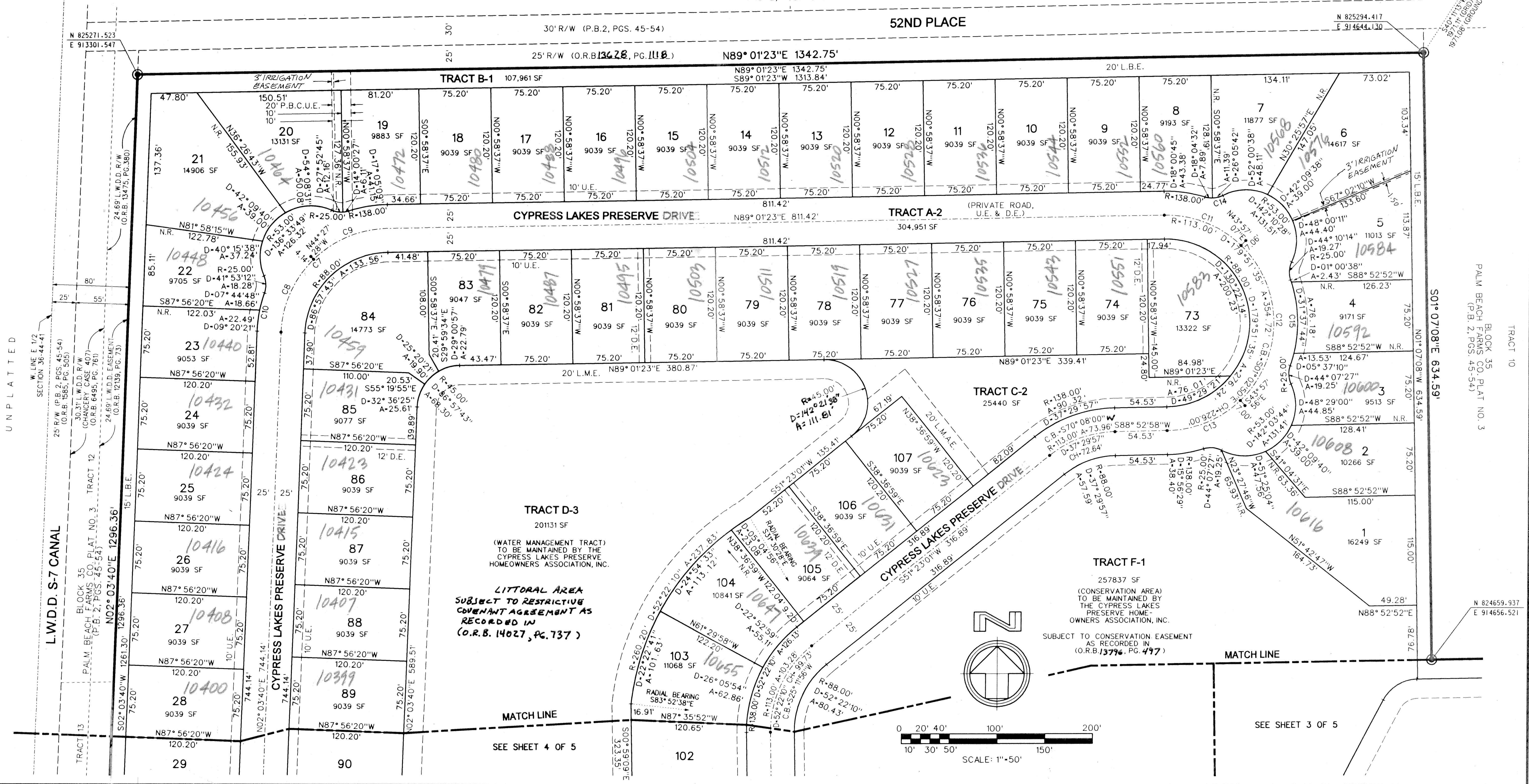
- SET PERMANENT REFERENCE MONUMENT (P.R.M.) • LB2936 UNLESS OTHERWISE NOTED
- PERMANENT CONTROL POINT (P.C.P.)
- ▲ INDICATOR OF ZERO LOT SIDE
- CENTERLINE
- ARC LENGTH
- DELTA (CENTRAL ANGLE)
- D.E. DRAINAGE EASEMENT
- L.A.E. LIMITED ACCESS EASEMENT
- L.M.A.E. LAKE MAINTENANCE ACCESS EASEMENT
- L.M.E. LAKE MAINTENANCE EASEMENT
- L.S.E. LIFT STATION EASEMENT
- L.W.D.D. LAKE WORTH DRAINAGE DISTRICT

- N.R. • NON-RADIAL
- O.R.B. • OFFICIAL RECORDS BOOK
- P.G. • PAGE
- P.B. • PLAT BOOK
- P.B.C.R. • PALM BEACH COUNTY RECORDS
- P.B.C.U.E. • PALM BEACH COUNTY UTILITY EASEMENT
- P.O.B. • POINT OF BEGINNING
- P.O.C. • POINT OF COMMENCEMENT
- P.U.D. • PLANNED UNIT DEVELOPMENT
- R • RADIUS
- R.E.E. • ROOF ENCROACHMENT EASEMENT
- R/W • RIGHT-OF-WAY
- SF • SQUARE FEET
- U.E. • UTILITY EASEMENT
- CH. • CHORD
- C.B. • CHORD BEARING

SHEET 5 OF 5

NE CORNER SECTION 36-44-41 FOUND BRASS DISK IN CONCRETE MONUMENT

1171.11' (GRND)
1971.08' (GROUND)



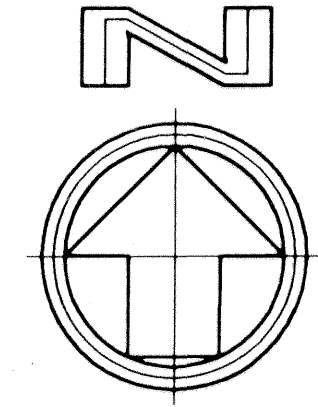
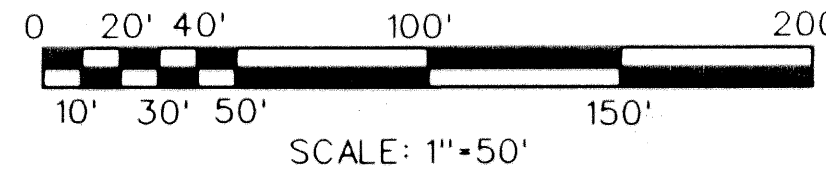
UNPLATTED

L.W.D.D. S-7 CANAL
BLOCK 35
PALM BEACH FARMS CO. PLAT NO. 3
(P.B. 2, PGS. 45-54)

PALM BEACH FARMS CO. PLAT NO. 3
(P.B. 2, PGS. 45-54)

TRACT D-3
201131 SF
(WATER MANAGEMENT TRACT) TO BE MAINTAINED BY THE CYPRESS LAKES PRESERVE HOMEOWNERS ASSOCIATION, INC.
LITTORAL AREA SUBJECT TO RESTRICTING COVENANT AGREEMENT AS RECORDED IN (O.R.B. 14027, PG. 137)

TRACT F-1
257837 SF
(CONSERVATION AREA) TO BE MAINTAINED BY THE CYPRESS LAKES PRESERVE HOMEOWNERS ASSOCIATION, INC.
SUBJECT TO CONSERVATION EASEMENT AS RECORDED IN (O.R.B. 13796, PG. 477)



MATCH LINE

SEE SHEET 3 OF 5

SEE SHEET 4 OF 5